




UH  
BY ELLINGTON





An aerial view of a modern apartment complex at dusk. The complex consists of several high-rise buildings with glass facades and balconies, some of which are illuminated from within. In the center of the complex is a large, winding lake or water feature, surrounded by lush greenery and landscaped grounds. The sky is a mix of blue and orange, suggesting the time is either sunrise or sunset. The overall atmosphere is one of a vibrant, modern urban environment.

## Welcome to the intersection of wellness and urbanism

The modernist apartments at UH by Ellington are centred around a holistic design philosophy. Maximising access to a wealth of facilities, offering expansive views and bringing residents closer together, it is a vibrant ecosystem where wellness, and urbanism can co-exist.



## YOUNG AND WELL CONNECTED

A burgeoning social hub just  
minutes from the city

Jumeirah Lake Towers stems from magnificent urbanist lakes, pristine tower blocks, and peaceful walkways and bridges. The location is well connected to the city centre but removes it from crowded areas. This allows room for quiet parks, lively restaurants, and other hidden gems to be found.





DRIVING  
DISTANCES

02  
MINUTES  
Jumeirah Lakes Park

02  
MINUTES  
DMCC Metro Station

07  
MINUTES  
Montgomerie Golf Club

08  
MINUTES  
Emirates Golf Club

08  
MINUTES  
Ain Dubai

13  
MINUTES  
Mall of the Emirates

15  
MINUTES  
Palm Jumeirah

17  
MINUTES  
Burj Al Arab

19  
MINUTES  
Museum of the Future

20  
MINUTES  
Dubai Mall & Burj Khalifa

23  
MINUTES  
Dubai International Financial Centre

25  
MINUTES  
Dubai International Airport

27  
MINUTES  
Al Maktoum International Airport







LOBBY  
RECEPTION



## MAKE A UH BY ELLINGTON ENTRANCE

From the shaded hotel-style entrance, a double-height atrium space, a monolithic reception counter, and a beautifully furnished lounge await. The space is open and impressive, yet warm and homely. It has an ambiance that welcomes residents and their guests to a comfortable area suited to socialising, working, and relaxing.



LOBBY LOUNGE

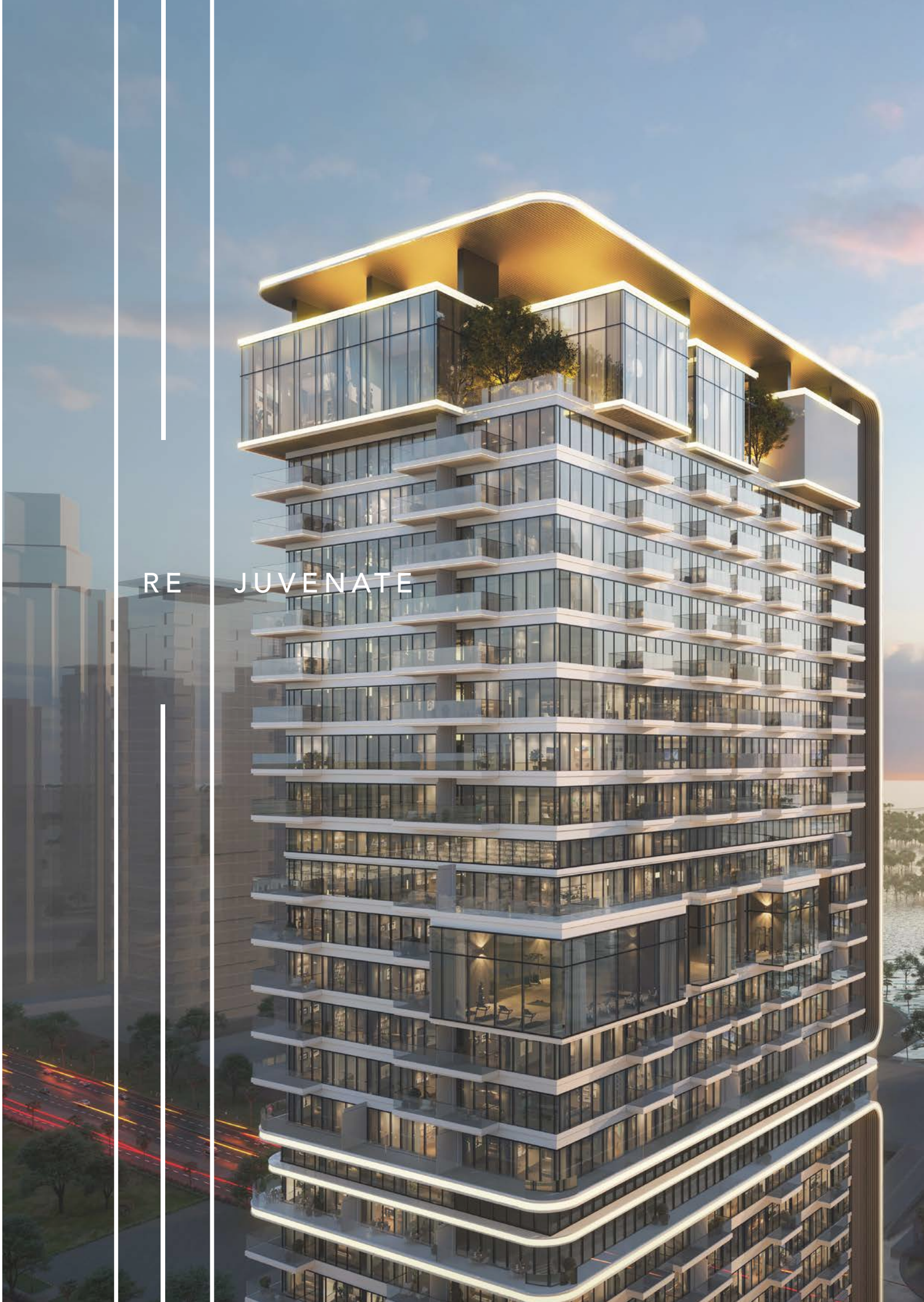


Connecting nature  
with nurture

A thoughtful collection of  
amenities and on-site facilities  
created solely for you.



- Sky Spa
- Interactive Fitness
- Climbing Walls
- Aerial Yoga
- Sky Fitness Club
- Private cinema
- Podcast studio
- Skate Park
- Arcade Room
- Artist in Residence
- Basketball
- Padel Court
- Outdoor Yoga
- Infinity Pool
- Club Lounge
- Workstations
- BBQ Station
- Kids’ play area
- Bicycle workshop
- E-Vehicle charging stations
- Lobby and lounge
- Drop-off stations





THE PODIUM





# ELEVATE YOUR WAY OF LIFE

An expanse of sports, well-being, and relaxation, above street level. Residents have exclusive access to rare moments of space and nature close moments from the city centre. It lifts the energy of the building with dedicated areas for exercise, sports, relaxation and an infinity pool looking out toward the coastline.

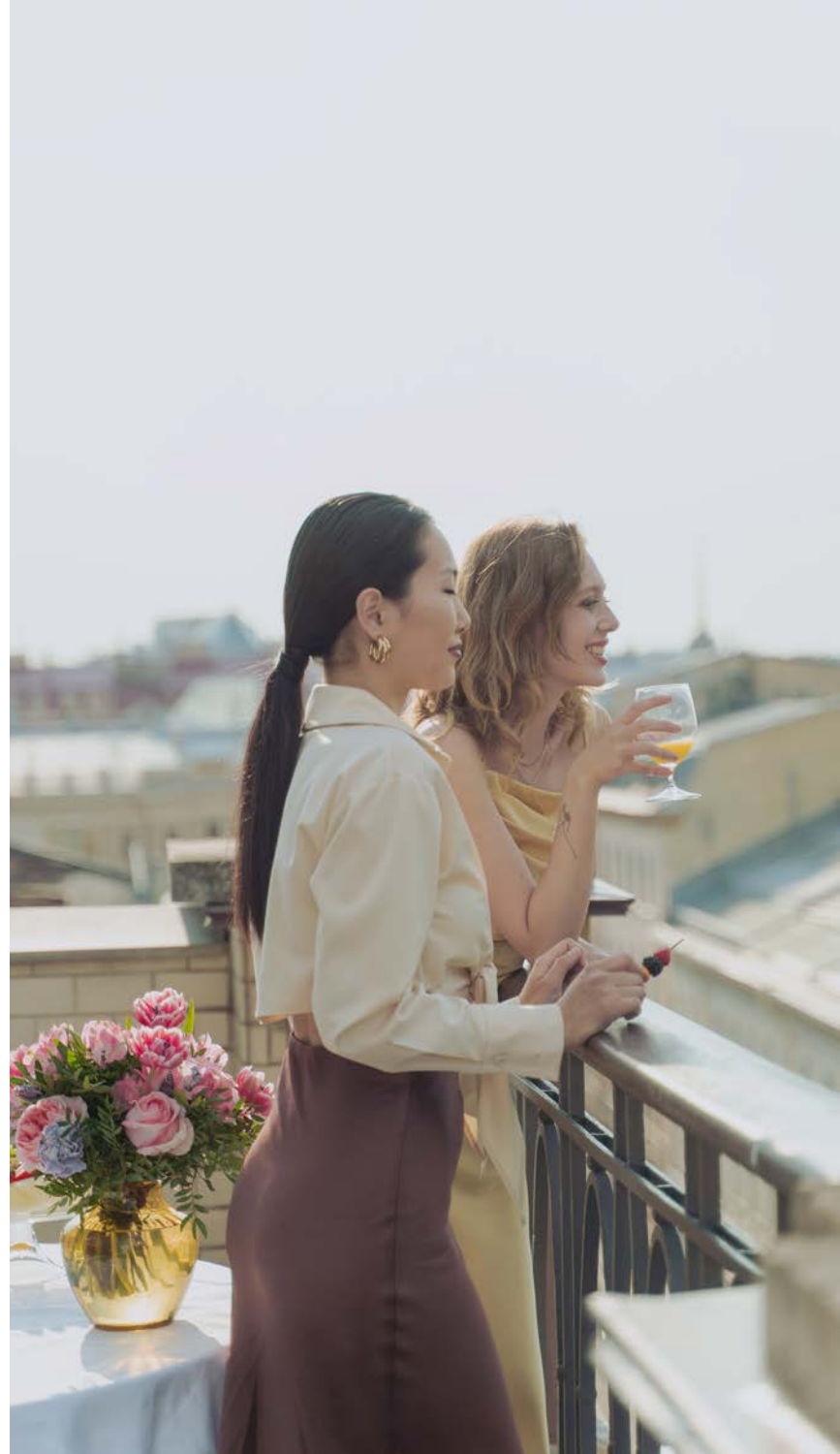






PODCAST ROOM





## Space to welcome nature

Through floor-to-ceiling windows and open living spaces, the living rooms at UH by Ellington navigate natural light throughout the entire apartment. The space seamlessly intertwines with the building's flowing exteriors to create a new kind of energy for those who call it home.







CLUBHOUSE





KIDS PLAY  
AREA





INNER BALANCE  
AT MID-LEVEL





### A celebration of wellness

Under a double glass room hosting the three shared hubs dedicated to residents' health and well-being. These include a gym featuring a climbing wall and aerial yoga, as well as an innovative interactive fitness room to reinvigorate your workout with a new perspective.





INTERACTIVE  
FITNESS





WELLNESS  
SPA



PENTHOUSE  
FOR  
EVERYONE







A DIRECT  
CONNECTION  
TO NATURE



Welcome to a lively social hub with breathtaking views over the pool decking, across the city, and towards the coastline. The UH by Ellington Club Lounge invites residents to explore a vibrant space with a games room, plush furnishing, a pantry, and a peaceful library area to relax with a book and take in those impressive views. For evenings of entertainment with friends and family, there is also a bookable for public and private gatherings.





MULTI-PURPOSE  
ROOM







CINEMA ROOM



# RECORD LOUNGE







ARCADE ROOM



## APARTMENTS

From the curved stylised balconies and floor-to-ceiling windows, residents can enjoy panoramic views from their modern, urban-ready homes. They are comprised of a clean simple materials palette, beautifully detailed and framed. Subtle champagne accents, textures, and defining lines evoke Ellington's trademark quality and take inspiration from the movement of water, light, and wind.



## KITCHENS

UH by Ellington kitchens are exemplary of the resident-first design that Ellington are renowned for. From usability and storage to smart planning solutions like the pop-up pantry that becomes an extension to your kitchen to store or display easily accessible appliances.







LIVING ROOMS





## BEDROOMS

### A new awakening

Bedrooms are a soft and intimate retreat from the open and airy spaces of UH by Ellington. They are a place to feel belonging and relaxation while waking up to the sunrise and watching the sunset at the end of another day.





BATHROOMS





## POWDER ROOMS

### A spa-like experience

In addition to the practicality and seamless functionality of the bathrooms and powder rooms at UH by Ellington, there is a quality that allows for moments of complete revitalisation for mind and body. Among warm porcelain tiles and countertops, your bathing rituals become so much more meaningful than a daily routine.



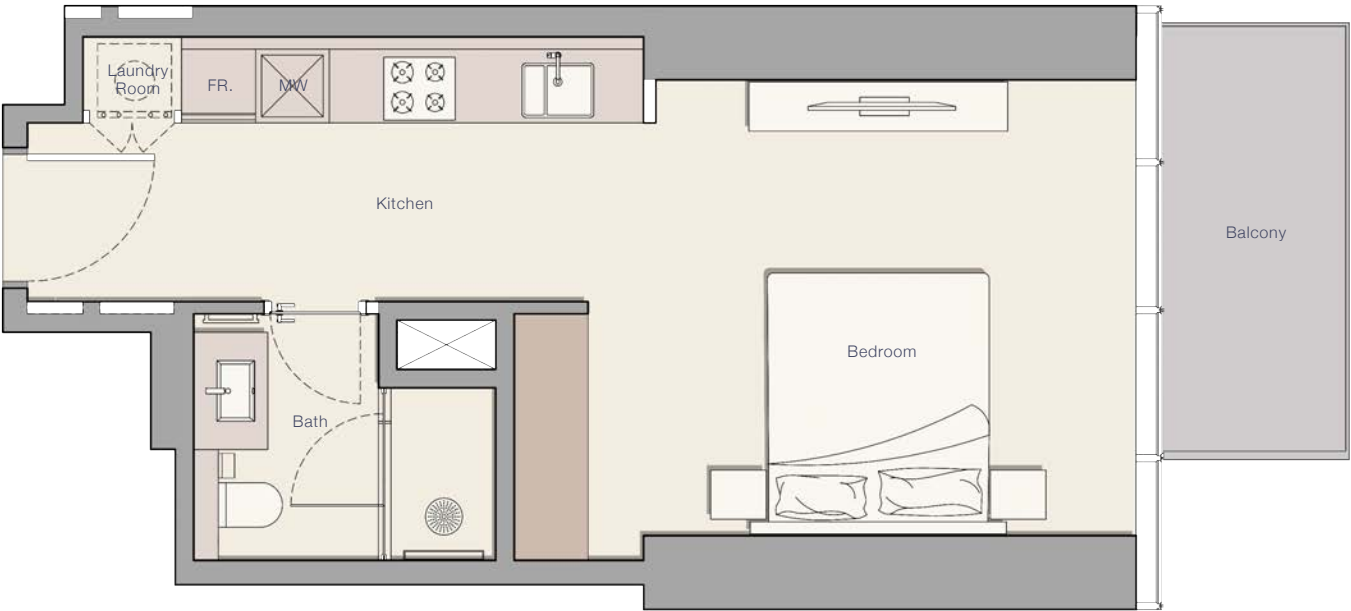


FLOOR PLANS



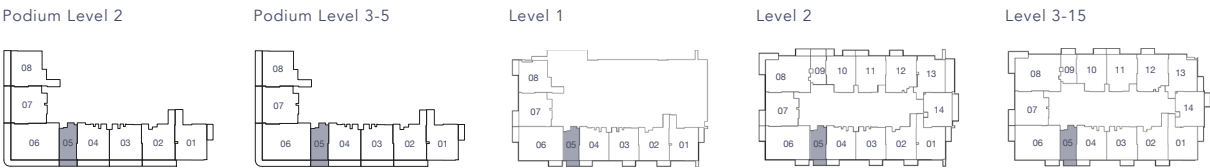
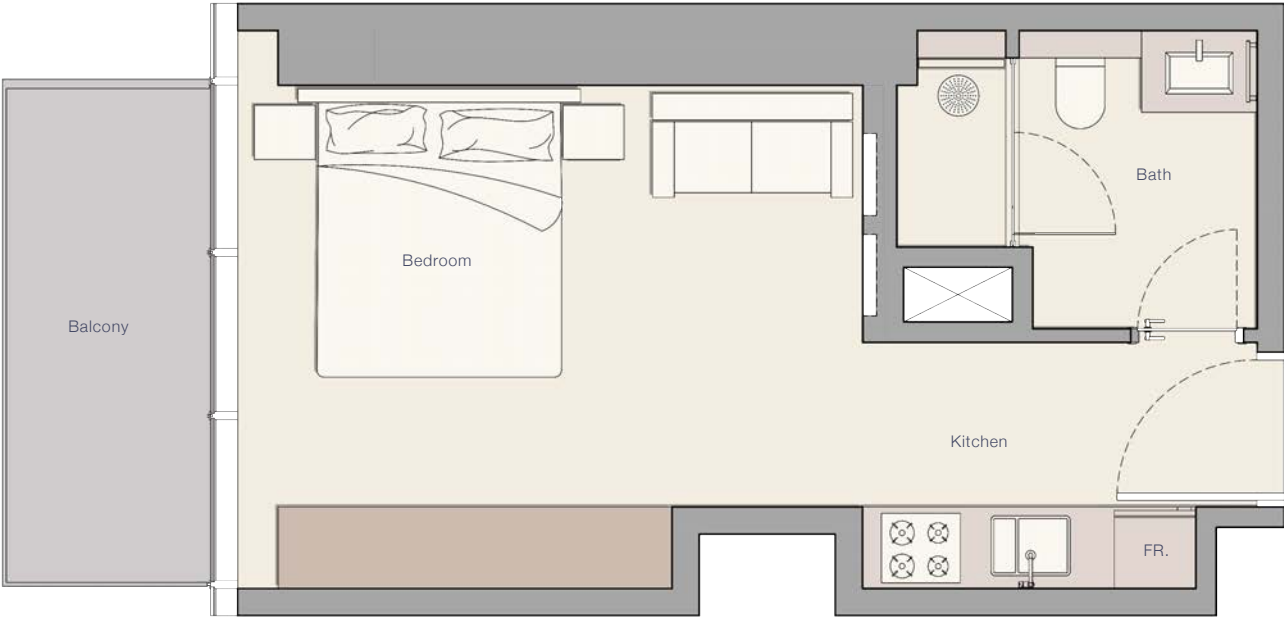
STUDIO  
TYPE A

|                      |        |       |
|----------------------|--------|-------|
| Internal Living Area | 402.68 | sq.ft |
| Outdoor Living Area  | 58.66  | sq.ft |
| Total Living Area    | 461.34 | sq.ft |



STUDIO  
TYPE B

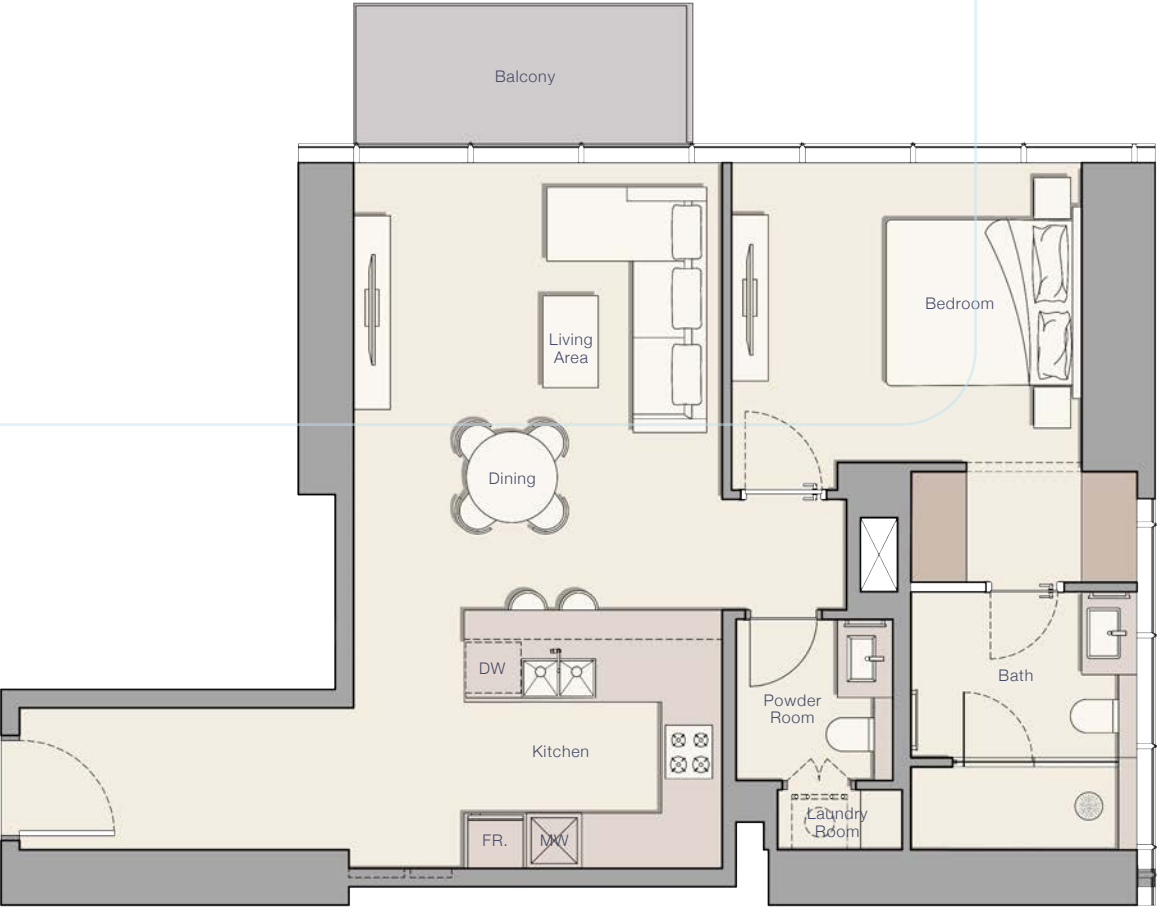
|                      |        |       |
|----------------------|--------|-------|
| Internal Living Area | 340.35 | sq.ft |
| Outdoor Living Area  | 61.25  | sq.ft |
| Total Living Area    | 401.60 | sq.ft |





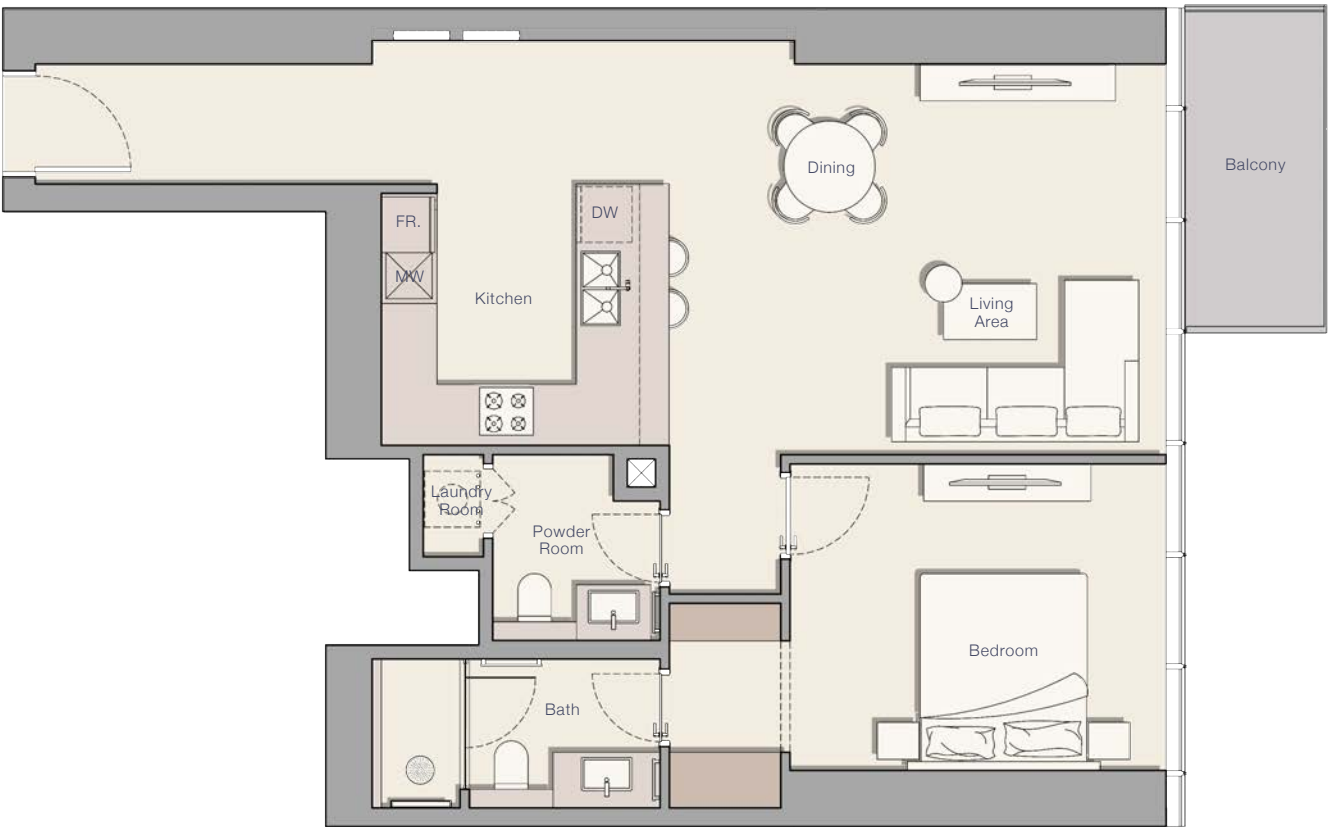
1 BEDROOM  
TYPE A

|                      |        |       |
|----------------------|--------|-------|
| Internal Living Area | 830.11 | sq.ft |
| Outdoor Living Area  | 66.09  | sq.ft |
| Total Living Area    | 896.20 | sq.ft |



1 BEDROOM  
TYPE B

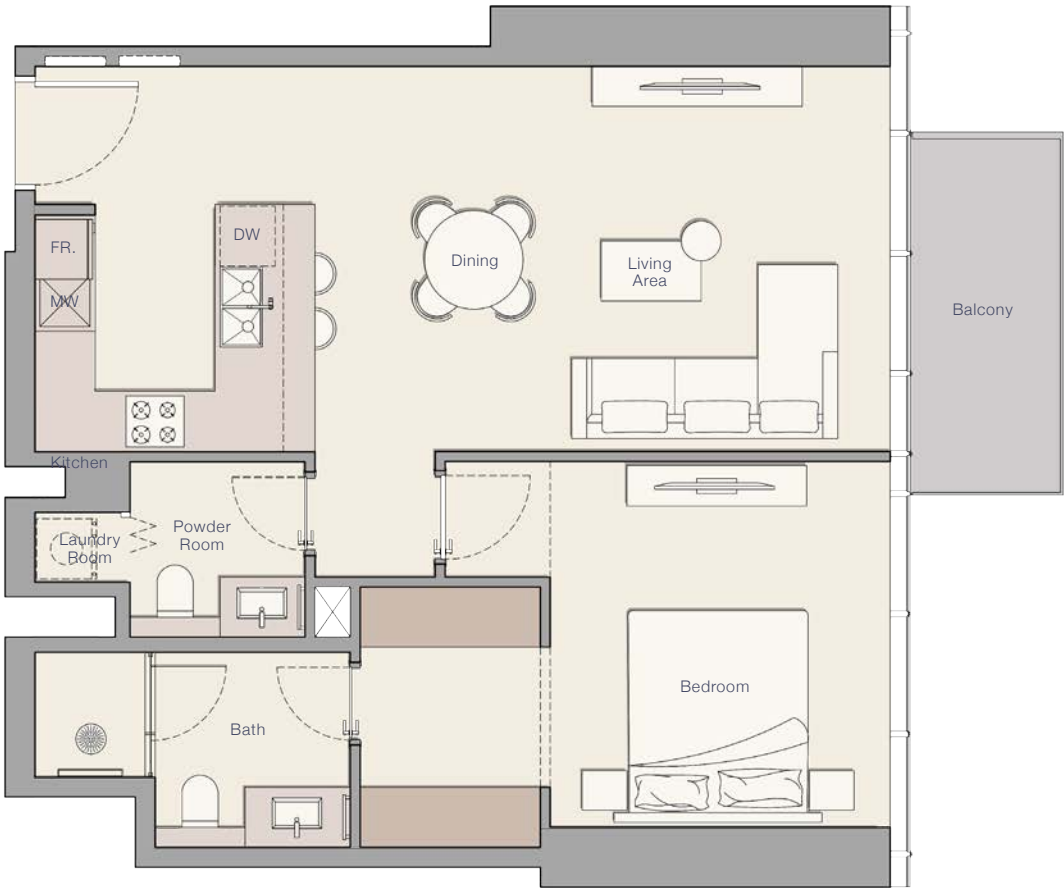
|                      |        |       |
|----------------------|--------|-------|
| Internal Living Area | 852.29 | sq.ft |
| Outdoor Living Area  | 57.59  | sq.ft |
| Total Living Area    | 909.87 | sq.ft |





1 BEDROOM  
TYPE C

|                      |        |       |
|----------------------|--------|-------|
| Internal Living Area | 766.28 | sq.ft |
| Outdoor Living Area  | 57.91  | sq.ft |
| Total Living Area    | 824.19 | sq.ft |



1 BEDROOM  
TYPE D

|                      |        |       |
|----------------------|--------|-------|
| Internal Living Area | 865.53 | sq.ft |
| Outdoor Living Area  | 79.33  | sq.ft |
| Total Living Area    | 944.86 | sq.ft |





1 BEDROOM  
TYPE E

|                      |        |       |
|----------------------|--------|-------|
| Internal Living Area | 798.47 | sq.ft |
| Outdoor Living Area  | 56.62  | sq.ft |
| Total Living Area    | 855.09 | sq.ft |



1 BEDROOM  
TYPE F

|                      |        |       |
|----------------------|--------|-------|
| Internal Living Area | 858.74 | sq.ft |
| Outdoor Living Area  | 59.63  | sq.ft |
| Total Living Area    | 918.38 | sq.ft |





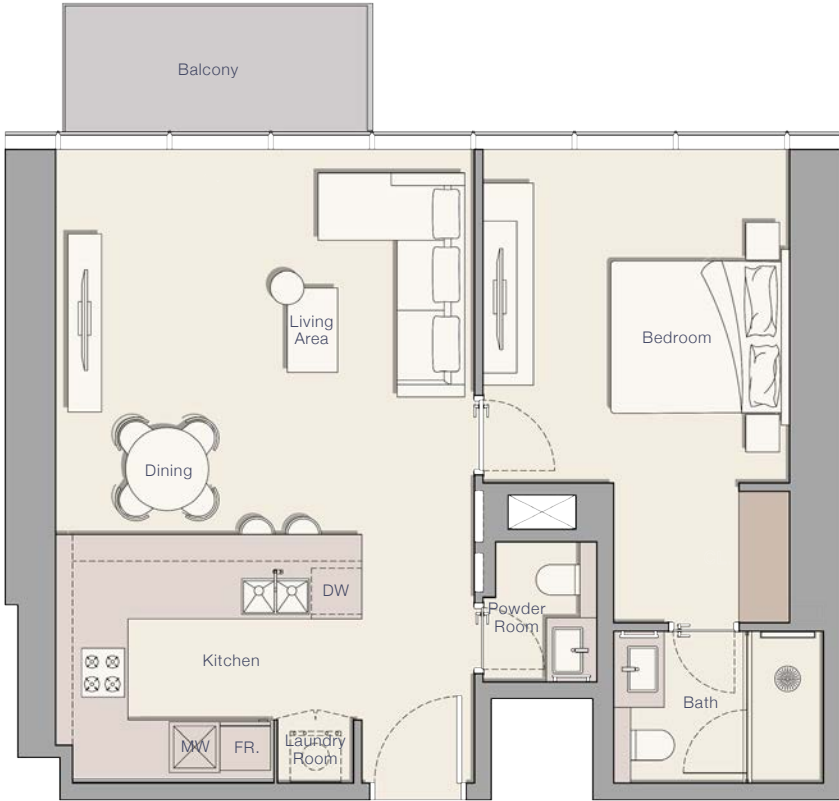
1 BEDROOM  
TYPE G

|                      |        |       |
|----------------------|--------|-------|
| Internal Living Area | 836.79 | sq.ft |
| Outdoor Living Area  | 69.64  | sq.ft |
| Total Living Area    | 906.43 | sq.ft |



1 BEDROOM  
TYPE H

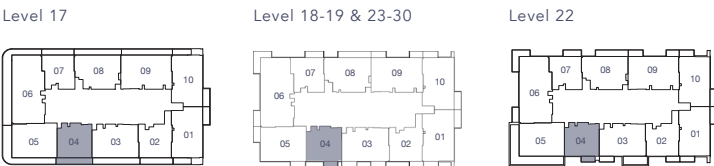
|                      |        |       |
|----------------------|--------|-------|
| Internal Living Area | 758.32 | sq.ft |
| Outdoor Living Area  | 60.71  | sq.ft |
| Total Living Area    | 819.03 | sq.ft |





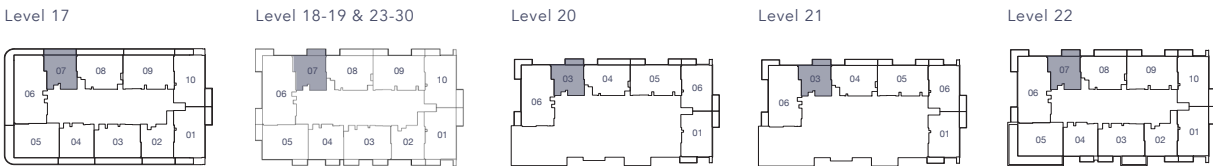
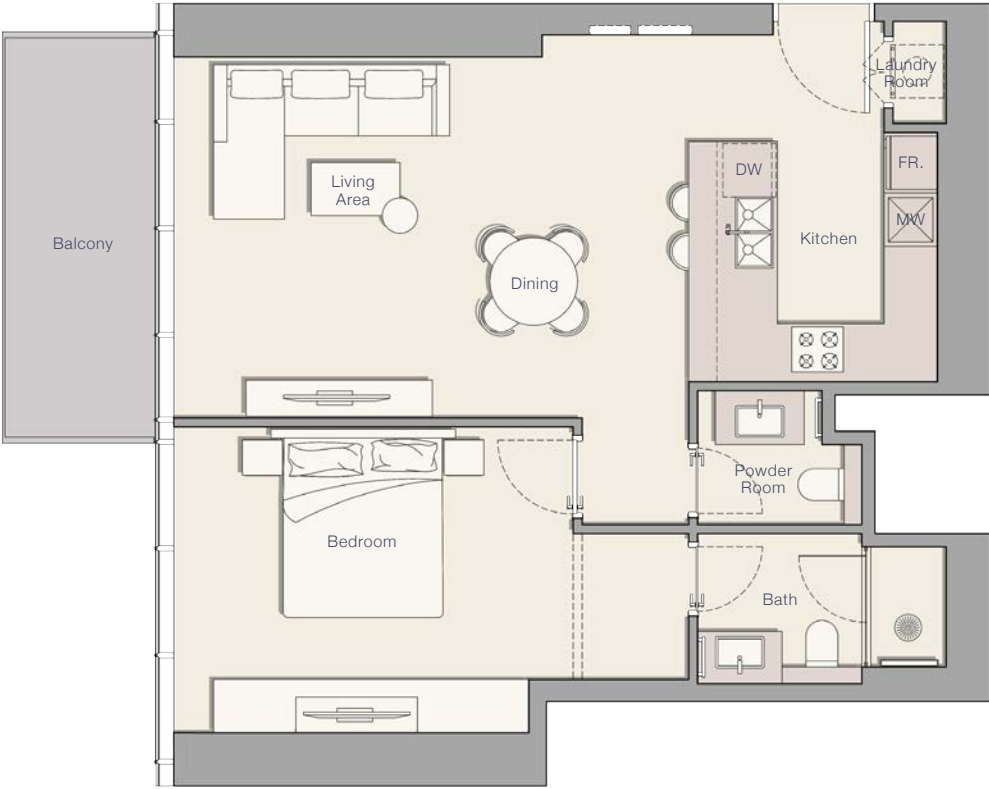
1 BEDROOM  
TYPE I

|                      |        |       |
|----------------------|--------|-------|
| Internal Living Area | 845.07 | sq.ft |
| Outdoor Living Area  | 57.91  | sq.ft |
| Total Living Area    | 902.98 | sq.ft |



1 BEDROOM  
TYPE J

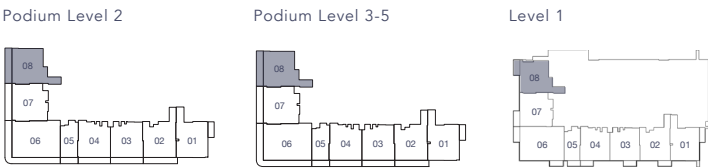
|                      |        |       |
|----------------------|--------|-------|
| Internal Living Area | 754.01 | sq.ft |
| Outdoor Living Area  | 85.79  | sq.ft |
| Total Living Area    | 839.80 | sq.ft |





1 BEDROOM  
TYPE K

|                      |        |       |
|----------------------|--------|-------|
| Internal Living Area | 844.86 | sq.ft |
| Outdoor Living Area  | 76.75  | sq.ft |
| Total Living Area    | 921.61 | sq.ft |



2 BEDROOM  
TYPE A

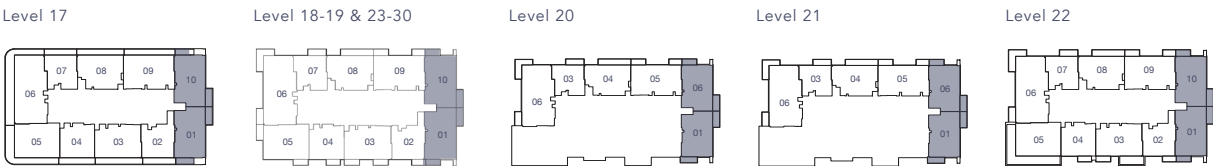
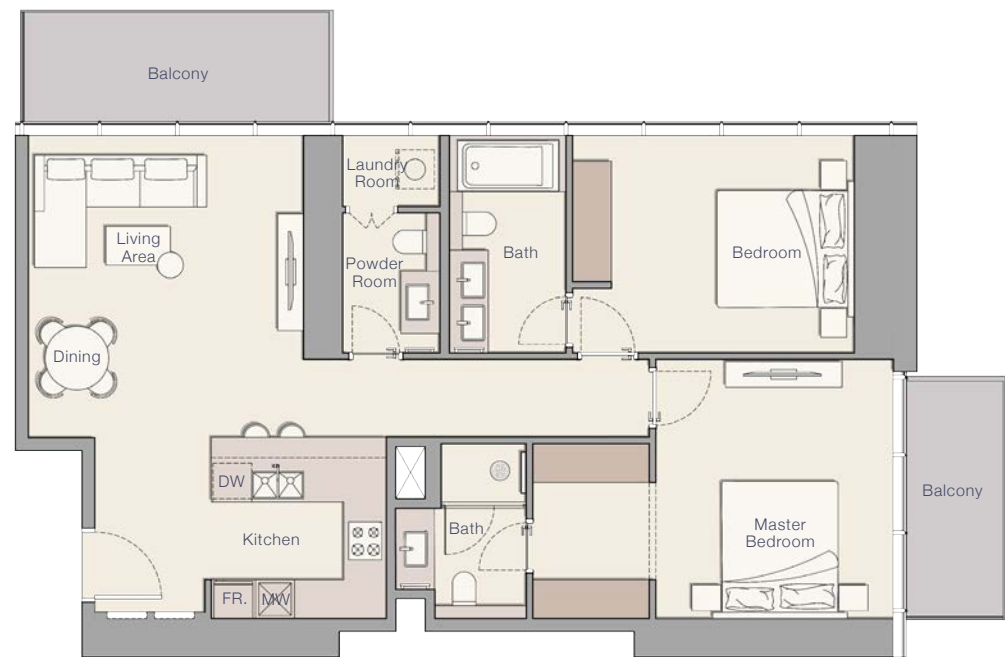
|                      |          |       |
|----------------------|----------|-------|
| Internal Living Area | 1,097.06 | sq.ft |
| Outdoor Living Area  | 139.50   | sq.ft |
| Total Living Area    | 1,236.56 | sq.ft |





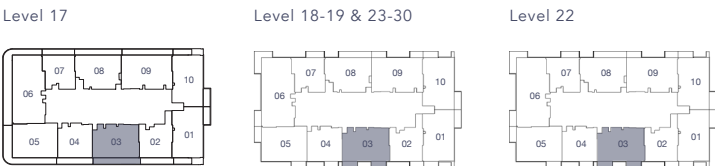
2 BED ROOM  
TYPE B

|                      |          |       |
|----------------------|----------|-------|
| Internal Living Area | 1,107.82 | sq.ft |
| Outdoor Living Area  | 151.56   | sq.ft |
| Total Living Area    | 1,259.38 | sq.ft |



2 BED ROOM  
TYPE C

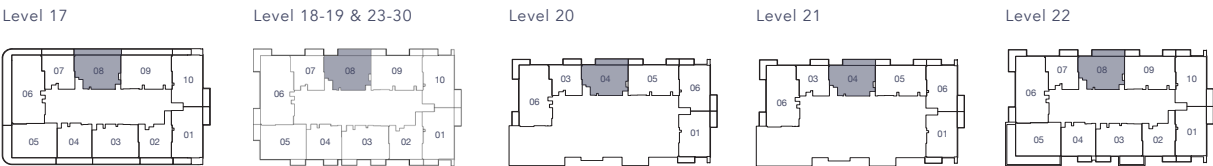
|                      |          |       |
|----------------------|----------|-------|
| Internal Living Area | 1,103.09 | sq.ft |
| Outdoor Living Area  | 122.60   | sq.ft |
| Total Living Area    | 1,225.69 | sq.ft |





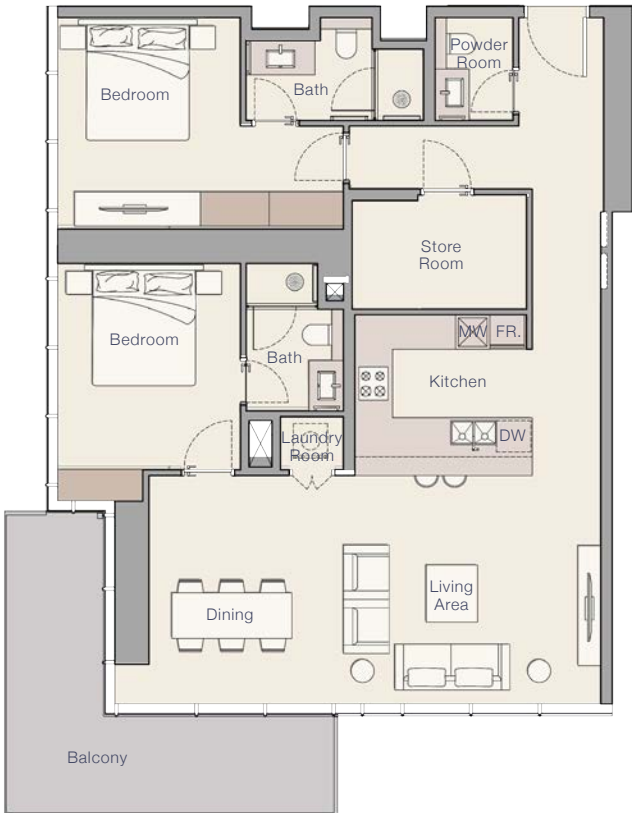
2 BEDROOM  
TYPE D

|                      |          |       |
|----------------------|----------|-------|
| Internal Living Area | 1,048.08 | sq.ft |
| Outdoor Living Area  | 155.32   | sq.ft |
| Total Living Area    | 1,204.41 | sq.ft |



2 BEDROOM + MAIDS  
TYPE A

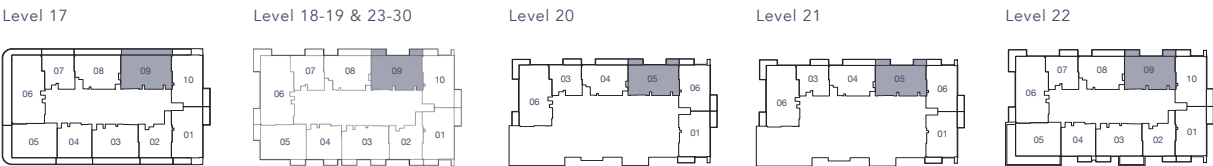
|                      |          |       |
|----------------------|----------|-------|
| Internal Living Area | 1,247.11 | sq.ft |
| Outdoor Living Area  | 175.24   | sq.ft |
| Total Living Area    | 1,422.34 | sq.ft |





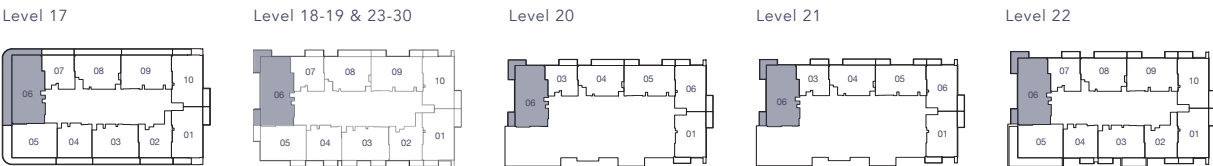
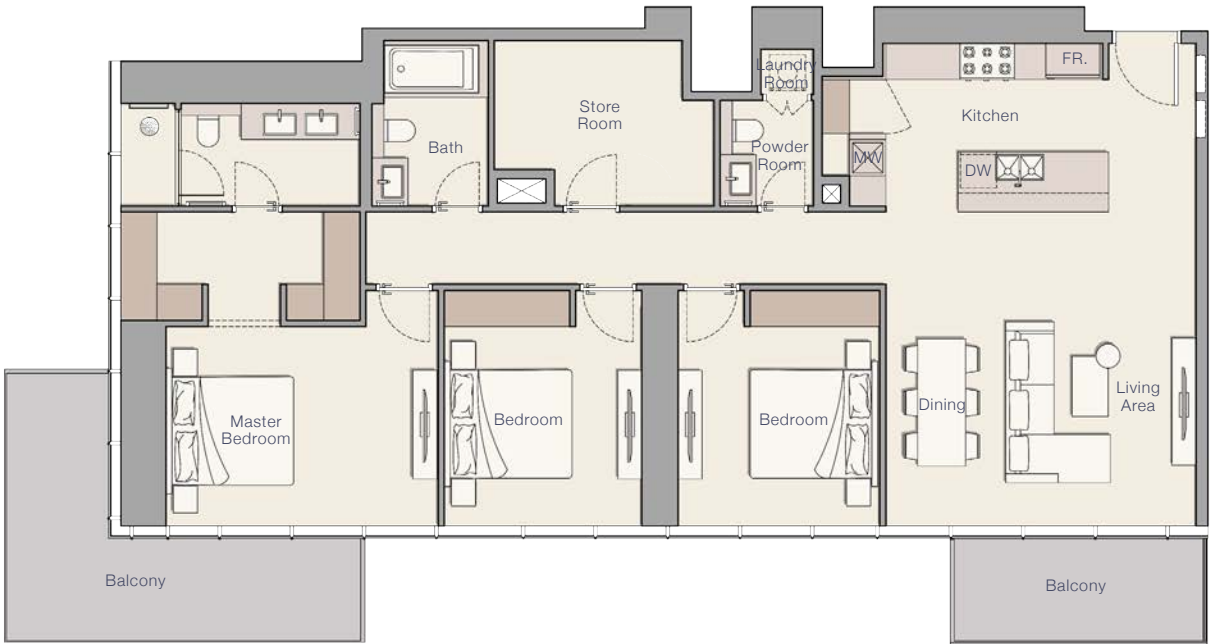
2 BEDROOM + MAID  
TYPE B

|                      |          |       |
|----------------------|----------|-------|
| Internal Living Area | 1,248.29 | sq.ft |
| Outdoor Living Area  | 130.89   | sq.ft |
| Total Living Area    | 1,379.18 | sq.ft |



3 BEDROOM  
TYPE A

|                      |          |       |
|----------------------|----------|-------|
| Internal Living Area | 1,581.33 | sq.ft |
| Outdoor Living Area  | 242.08   | sq.ft |
| Total Living Area    | 1,823.41 | sq.ft |





Our buildings are cooled and heated with low noise energy-efficient FCUs, with a system that collects condensation for irrigation. Our fitness centres are equipped with eco-conscious facilities. Our parking spaces accommodate charging points for electric vehicles. As our developments continue to expand across Dubai, our focus is on going above and beyond best practices to support environmentally friendly living with beautiful design.



ELLINGTON  
SUSTAINABILITY



